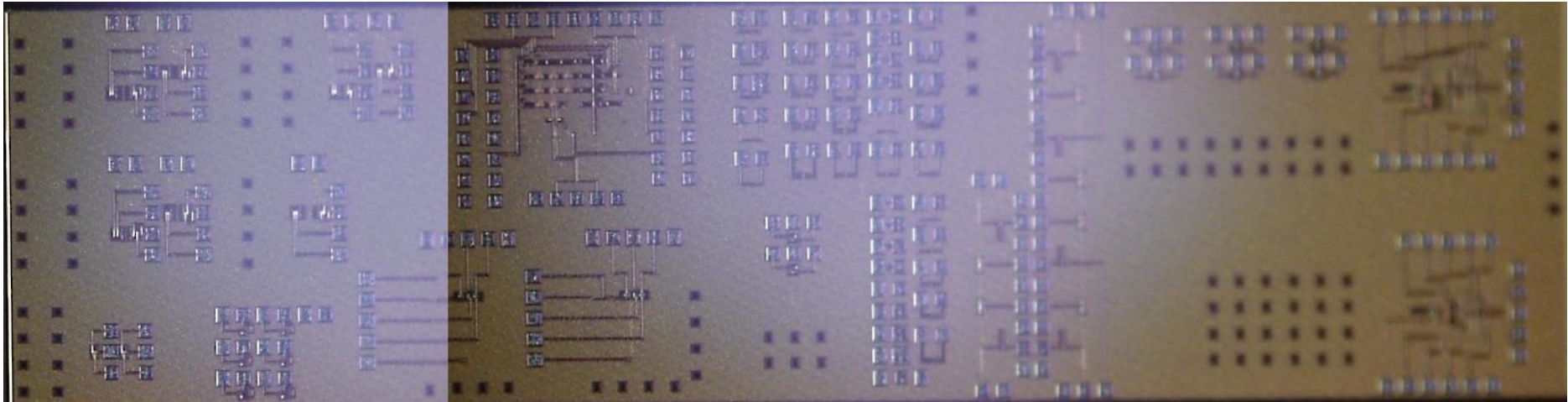


T448



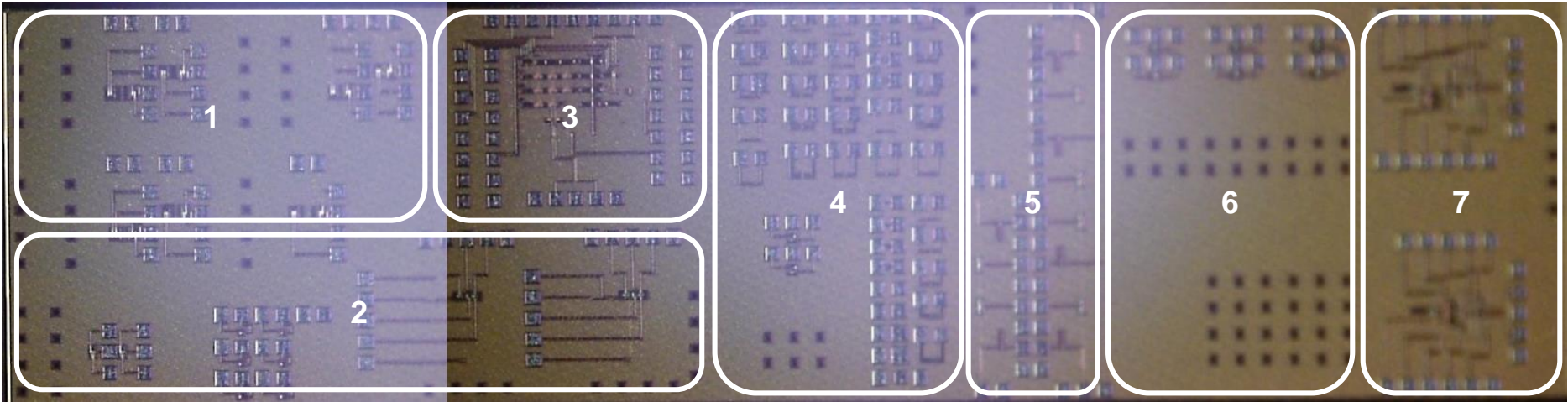
< Chip Designer >

: H.K. Kim, Y.K. Jo, D.W. Rho, M.H Seong, K.B. Hyun

< Process >

IHP SG25H5 EPIC-Cu

T448



1) Modulator heater optimization & crosstalk test block

(M.H. Seong)

2) Dual-ring QPSK Modulator

(Y.K. Jo)

3) BiCMOS PRBS Generator

(D.W. Rho)

4) POS Test Patterns

(K.B. Hyun)

5) 2ch, 4ch WDM Filter Array with Photodetector

(H.K. Kim)

6) Doping Heater Optimization, Cascaded Ring Filters

(M.H. Seong)

7) SF-TIA based Optical Receiver

(H.K. Kim)