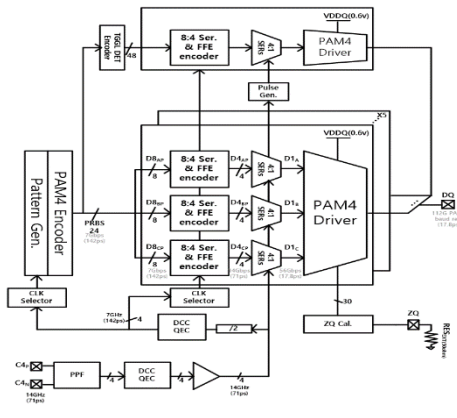
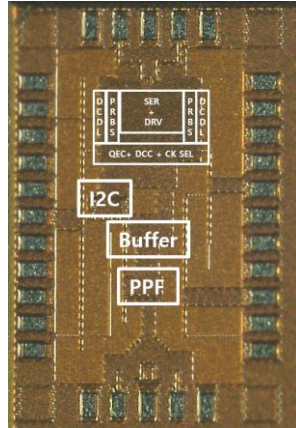


# 2022 ~ 2023 Works

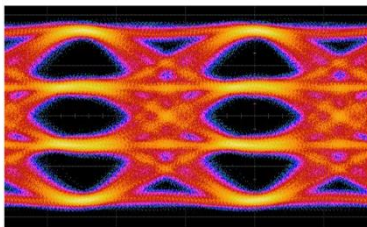
## 80Gbps PAM-4 LVSTL with Reconfigurable FFE and Transition Edge Enhanced Driver



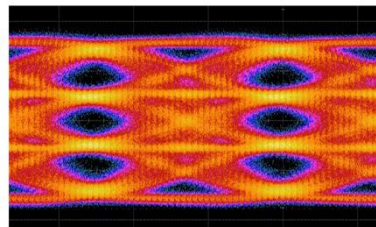
[Top Block diagram]



[Chip Micrograph]



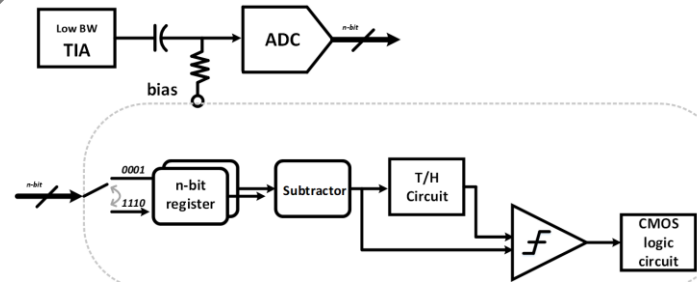
\*28Gbaud



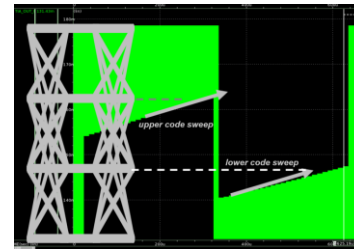
\*40Gbaud

[Measurement Results]

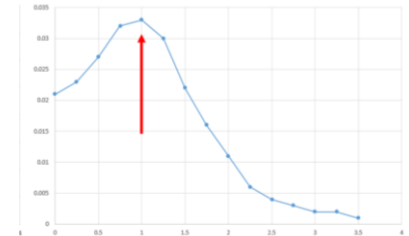
## Optical Tx with RLM Calibration & Thermal Controller



[Proposed Design]



[Behavioral Simulation]



[Simulation Result]

# 2023~ Plan

---

## ➤ Measurement

- SEC 2210:
  - 112Gbps PAM4 LVSTL Driver with Reconfigurable FFE

## ➤ Design

- SEC 28nm  
2023.04 (OTX w/ control), 2023.10(CML 112G TX)